

# Forsyth County EMS

## Skill Procedure: Triage: START & JumpSTART

	<b>MR / EMT</b>	
	<b>Expanded Scope EMT</b>	
	<b>EMT-I</b>	
	<b>EMT-P</b>	

### Clinical Indications:

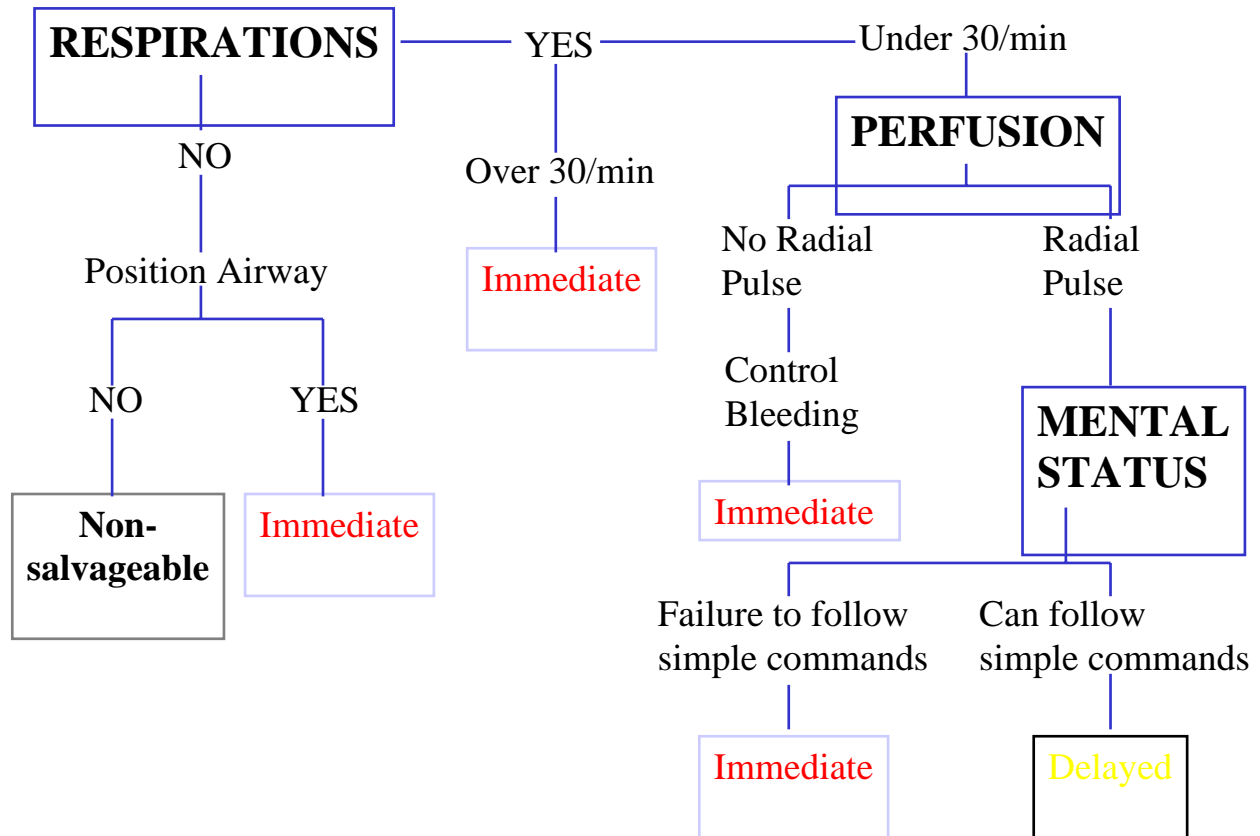
1) When faced with a multi-patient situation, START triage should be utilized for Adult patients and JumpSTART triage shall be utilized for Pediatric patients whose age is < 8 years.

## II Procedure

### START (Adult)

All patients that respond and listen appropriately to voice commands should be directed to a staging area and initially tagged as GREEN.

All other patients should be assessed using the following algorithm.



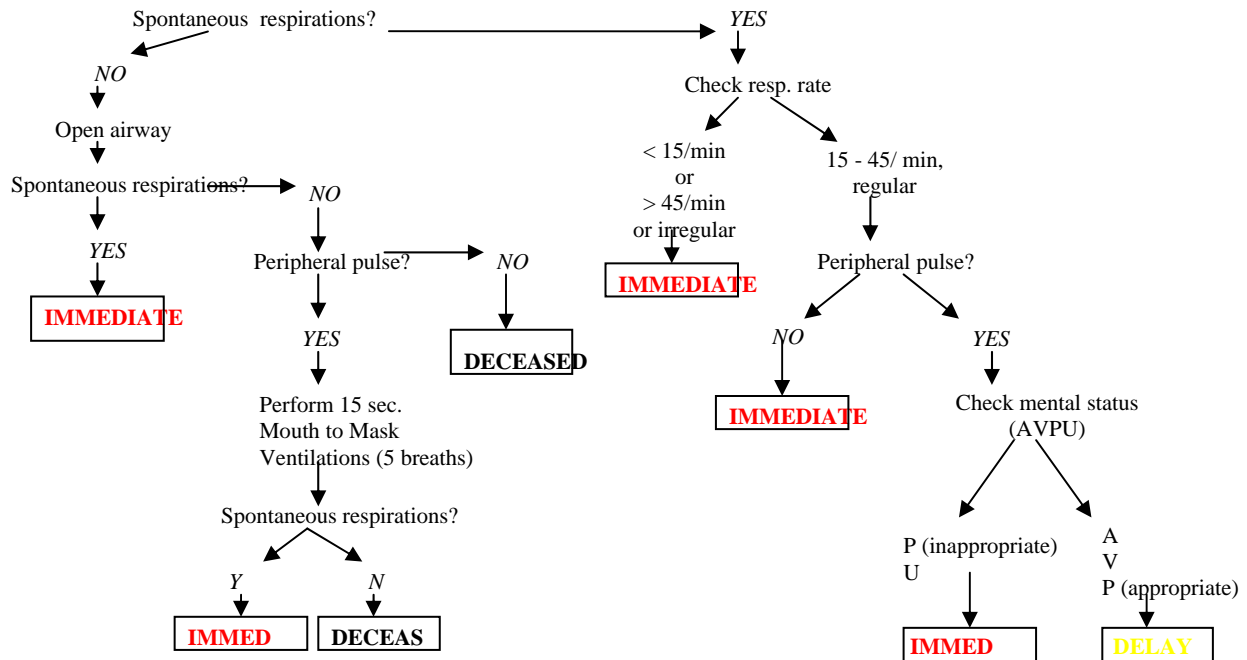
# Forsyth County EMS

## Skill Procedure: Triage: START & JumpSTART

### JumpSTART (Pediatric)

Identify and direct all ambulatory patients to designated Green area for secondary triage and treatment. Begin assessment of nonambulatory patients as you come to them. Proceed as below:

Black=Deceased/expectant  
 Red = Immediate  
 Yellow = Delayed  
 Green =Minor/Ambulatory



Copyright Lou E. Romig. All rights reserved. Used with permission.

### III. Certification Requirements:

Maintain knowledge of the indications, contraindications, technique, and possible complications of the procedure. Assessment of this knowledge may be accomplished via quality assurance mechanisms, classroom demonstrations, skills stations, or other mechanisms as deemed appropriate by the local EMS System. Assessment should include direct observation at least once per certification cycle.

Approved by:  
 Dr. R.L. Alson  
 Medical Director  
 May, 2006