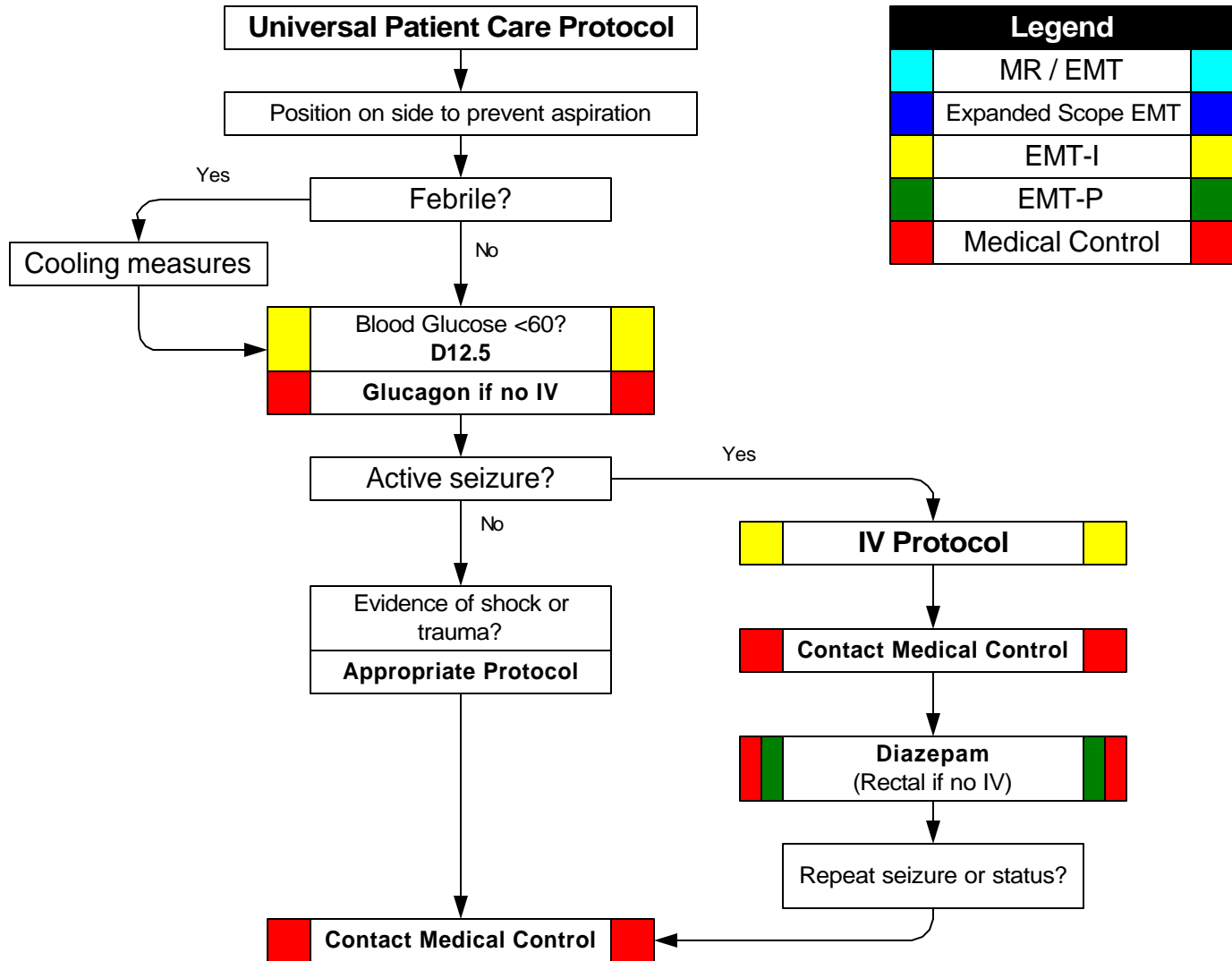


# FORSYTH COUNTY EMS Pediatric and OB Protocols

## Pediatric Seizure

<b>History:</b> * Fever * Prior history * Seizure medications * Reported seizure activities * History of recent head trauma * Congenital abnormality	<b>Signs and Symptoms:</b> * Observed seizure activity * Altered mental status * Hot, dry skin or elevated body temperature	<b>Differential:</b> * <b>Fever</b> * <b>Infection</b> * <b>Head trauma</b> * <b>Medication or trauma</b> * <b>Hypoxia or Respiratory failure</b> * <b>Hypoglycemia</b> * <b>Metabolic abnormality / acidosis</b> * <b>Tumor</b>
------------------------------------------------------------------------------------------------------------------------------------------------------------------------	--------------------------------------------------------------------------------------------------------------------------------------	----------------------------------------------------------------------------------------------------------------------------------------------------------------------------------------------------------------------------------------------------------



**Pearls:**

- \* **Exam: Mental Status, HEENT, Heart, Lungs, Extremities, Neuro**
- \* **Status Epilepticus** is defined as two or more successive seizures without a period of consciousness or recovery.
- \* This is a true emergency requiring rapid airway control, treatment, and transport.
- \* **Grand mal seizures** (generalized) are associated with loss of consciousness, incontinence, and tongue trauma.
- \* **Focal seizures** effect only a part of the body and are not usually associated with a loss of consciousness.
- \* **Jacksonian seizures** are seizures which start as a focal seizure and become generalized.
- \* Be prepared to assist ventilations especially if a benzodiazipine is used.
- \* If febrile, remove clothing and sponge with room temperature water.
- \* **In an infant, a seizure may be the only evidence of a closed head injury.**