

FORSYTH COUNTY EMS Pediatric and OB Protocols

Newly Born

History:

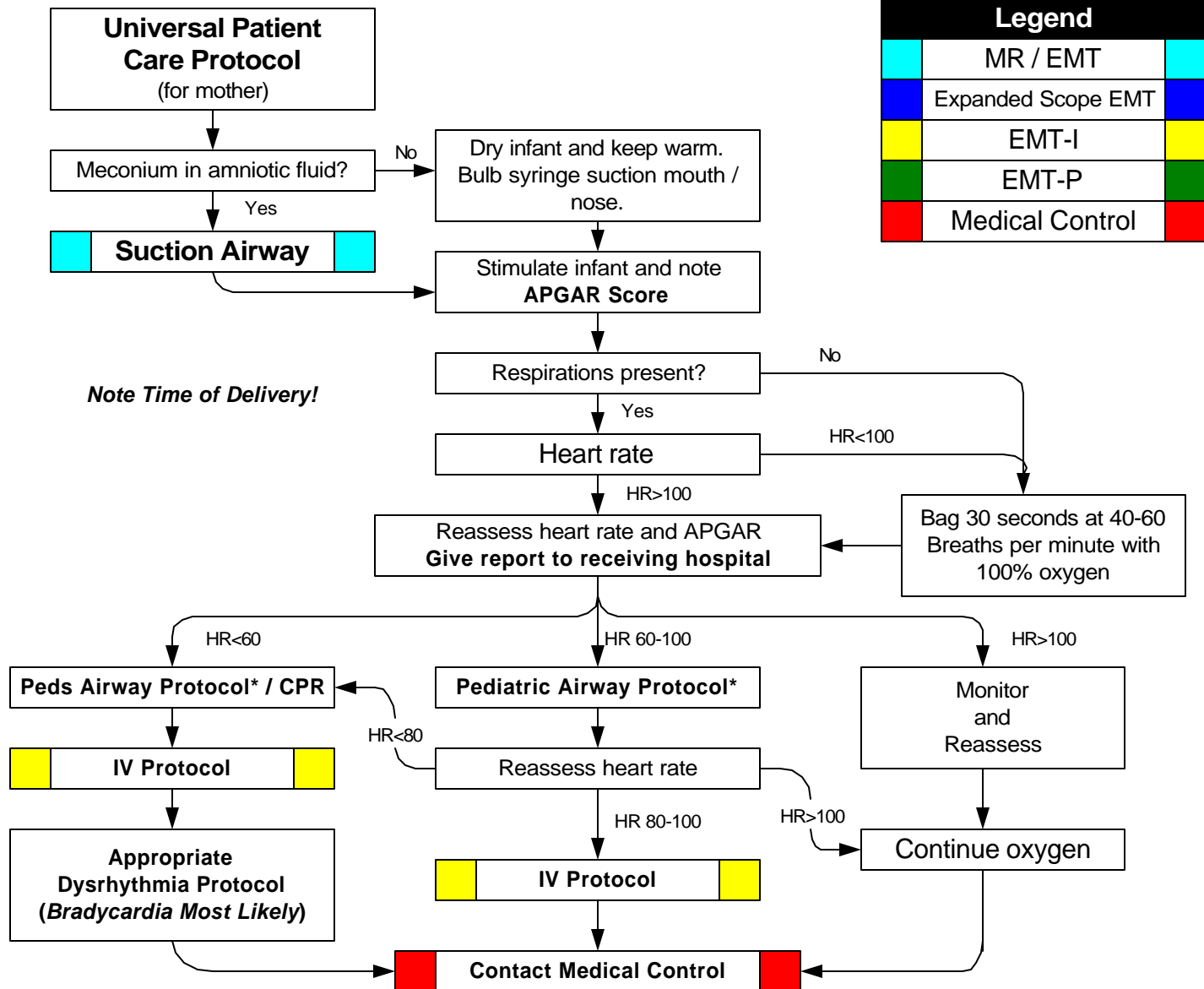
- * Due date and gestational age
- * Multiple gestation (twins, etc.)
- * Meconium
- * Delivery difficulties
- * Congenital disease
- * Medications (maternal)
- * Maternal risk factors
substance abuse
smoking

Signs and Symptoms:

- * Respiratory distress
- * Peripheral cyanosis or mottling (normal)
- * Central cyanosis (abnormal)
- * Altered level of responsiveness
- * Bradycardia

Differential:

- * Airway failure
- Secretions
- Respiratory drive
- * Infection
- * Maternal medication effect
- * Hypovolemia
- * Hypoglycemia
- * Congenital heart disease
- * Hypothermia



Pearls:

- * Exam: Mental Status, Skin, HEENT, Neck, Chest, Heart, Abdomen, Extremities, Neuro
- * Maternal sedation on narcotics will sedate infant (Naloxone effective)
- * Consider hypoglycemia in infant.
- * Document 1 and 5 minute APGAR scores (see Appendix)
- * Newly born infant should not be intubated unless >30 min transport or unable to maintain airway with BVM

Approved by: _____

R.L. Alson, M.D.
October, 2003