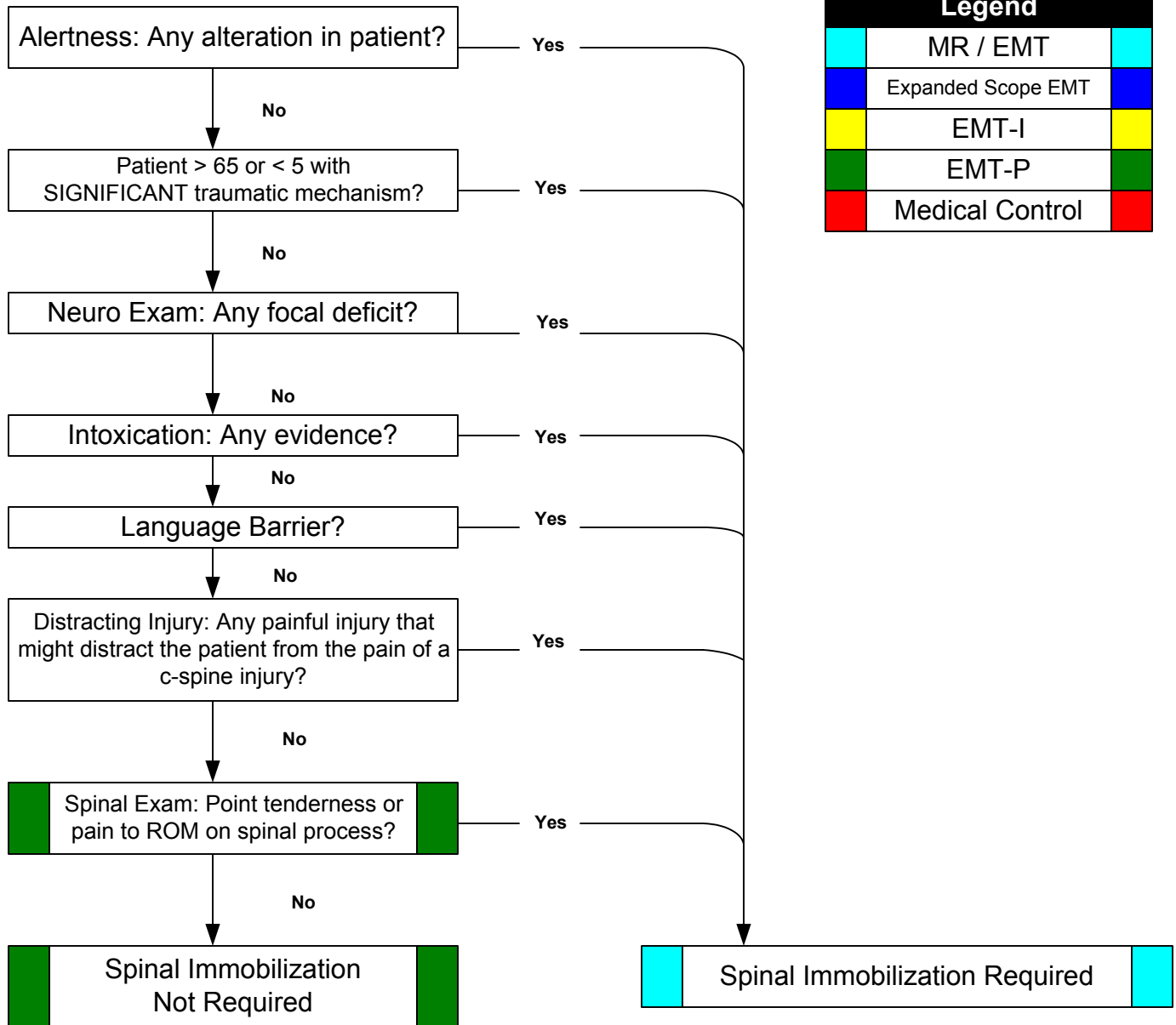


FORSYTH COUNTY EMS GENERAL PROTOCOLS

Spinal Immobilization Clearance



Legend		
	MR / EMT	
	Expanded Scope EMT	
	EMT-I	
	EMT-P	
	Medical Control	

Pearls:

- * **Exam: Mental Status, Skin, Neck, Heart, Lungs, Abdomen, Back, Extremities, Neuro**
- * Significant mechanism includes high-energy events such as ejection, falls >10ft., unrestrained rollover and abrupt deceleration crashes and may indicate the need for spinal immobilization in the absence of symptoms.
- * Range of motion should NOT be assessed if the patient has midline spinal tenderness.
- * The patient should touch their chin to their chest, extend their neck, and turn head from side to side without spinal process pain.
- * The acronym "**NSAIDS**" should be used to remember the steps in this protocol.
- * N = Neurologic exam
- * S = Significant mechanism
- * A = Alertness
- * I = Intoxication
- * D = Distracting injury
- * S = Spinal exam
- * **The decision to NOT implement spinal immobilization in a patient is the responsibility of the paramedic.**
- * **In very old and very young patients, a normal exam may not be sufficient to rule out spinal injury.**

Approved by: _____
R.L. Alson, M.D.
October, 2003