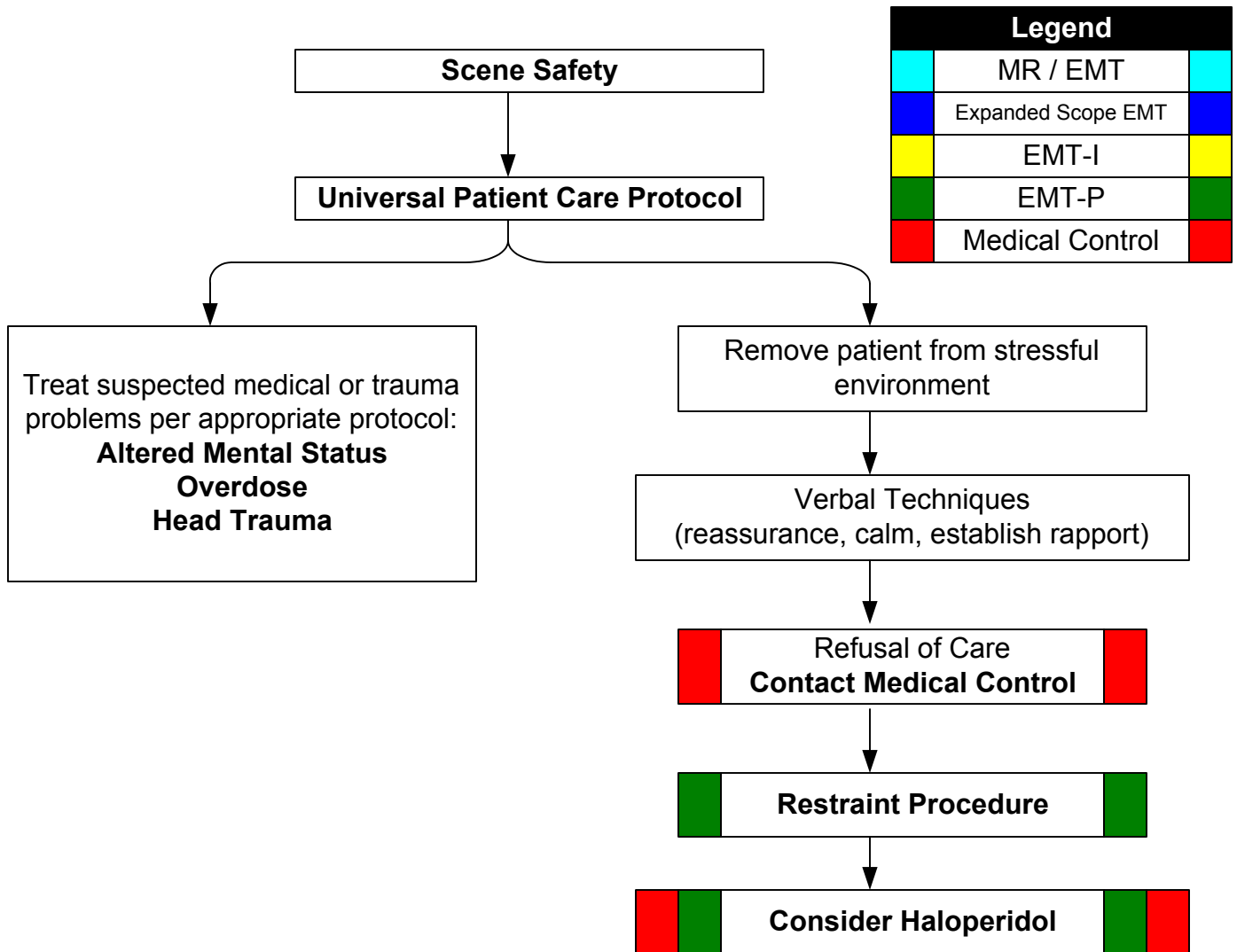


# FORSYTH COUNTY EMS GENERAL PROTOCOLS

## Behavioral

<b>History:</b> * Situational crisis * Psychiatric illness / medications * Injury to self or threats to others * Medic alert tag * Substance abuse / overdose * Diabetes	<b>Signs and Symptoms:</b> Anxiety, agitation, confusion Affect change, hallucinations Delusional thoughts, bizarre behavior Combative, violent Expression of suicidal / homicidal thoughts	<b>Differential:</b> <b>see Altered Mental Status differential</b> <b>Alcohol Intoxication</b> <b>Toxin / Substance abuse</b> <b>Medication effect / overdose</b> <b>Withdrawal syndromes</b> <b>Depression</b> <b>Bipolar (manic-depressive)</b> <b>Schizophrenia</b> <b>Anxiety disorders</b>
--	--	--



**Pearls:**

- \* **Exam: Mental Status, Skin, Heart, Lungs, Neuro**
- \* Your safety first!!
- \* Be sure to consider all possible medical / trauma causes for behavior (hypoglycemia, overdose, substance abuse, hypoxia, head injury, etc.)
- \* Do not irritate patient with prolonged exam.
- \* Do not overlook the possibility of associated domestic violence or child abuse.

Approved by: \_\_\_\_\_  
 R.L. Alson M.D.  
 October, 2003