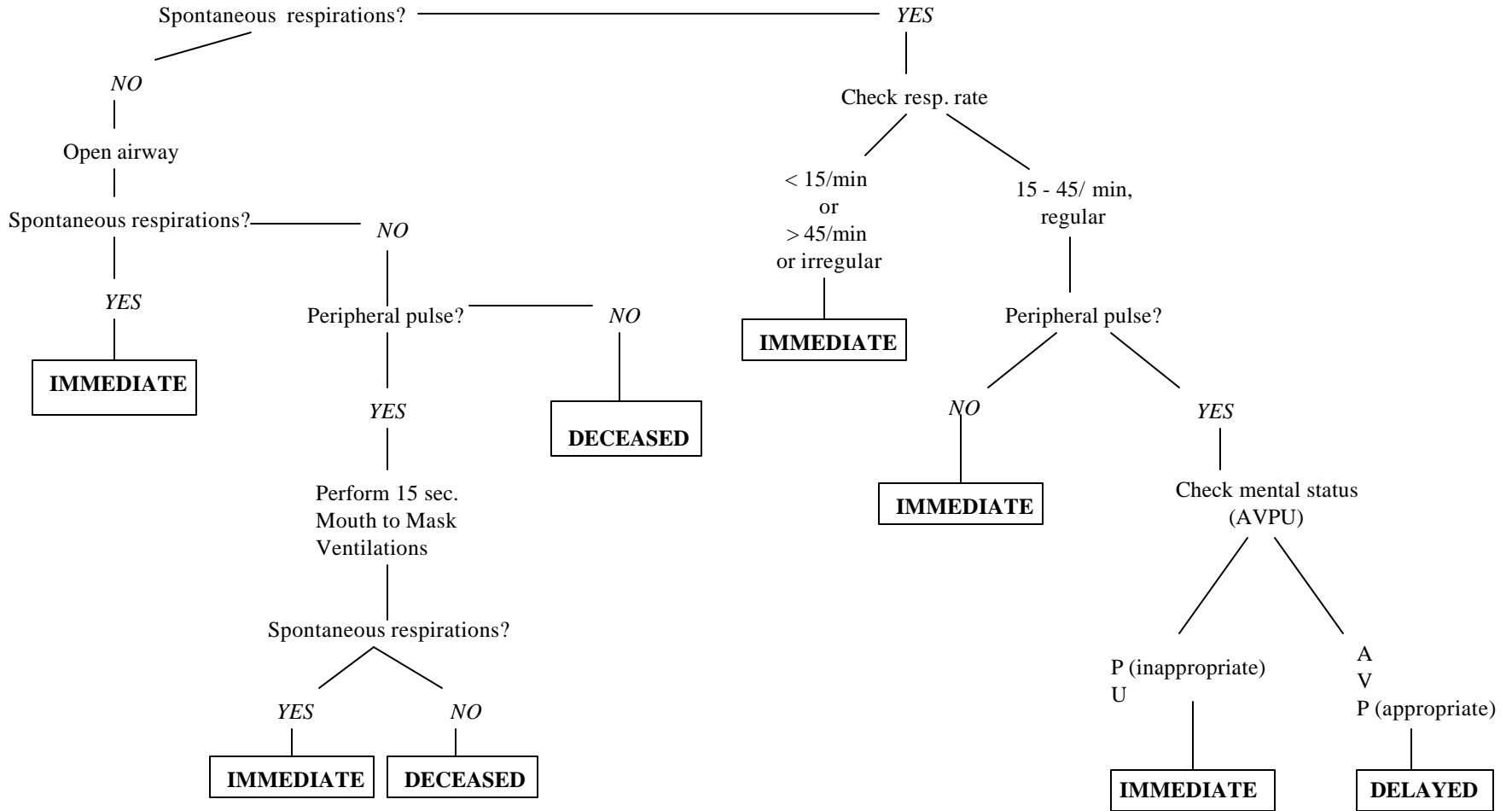


The JumpSTART Field Pediatric Multicasualty Triage System©

Identify and direct all ambulatory patients to designated Green area for secondary triage and treatment. Begin assessment of nonambulatory patients as you come to them. Proceed as below:

MINOR

Black = Deceased/expectant
 Red = Immediate
 Yellow = Delayed
 Green = Minor/Ambulatory



START Triage

